

You can also catch the bus at these times and this location, with no booking necessary.



ON DEMAND

St. Charles - Geneva

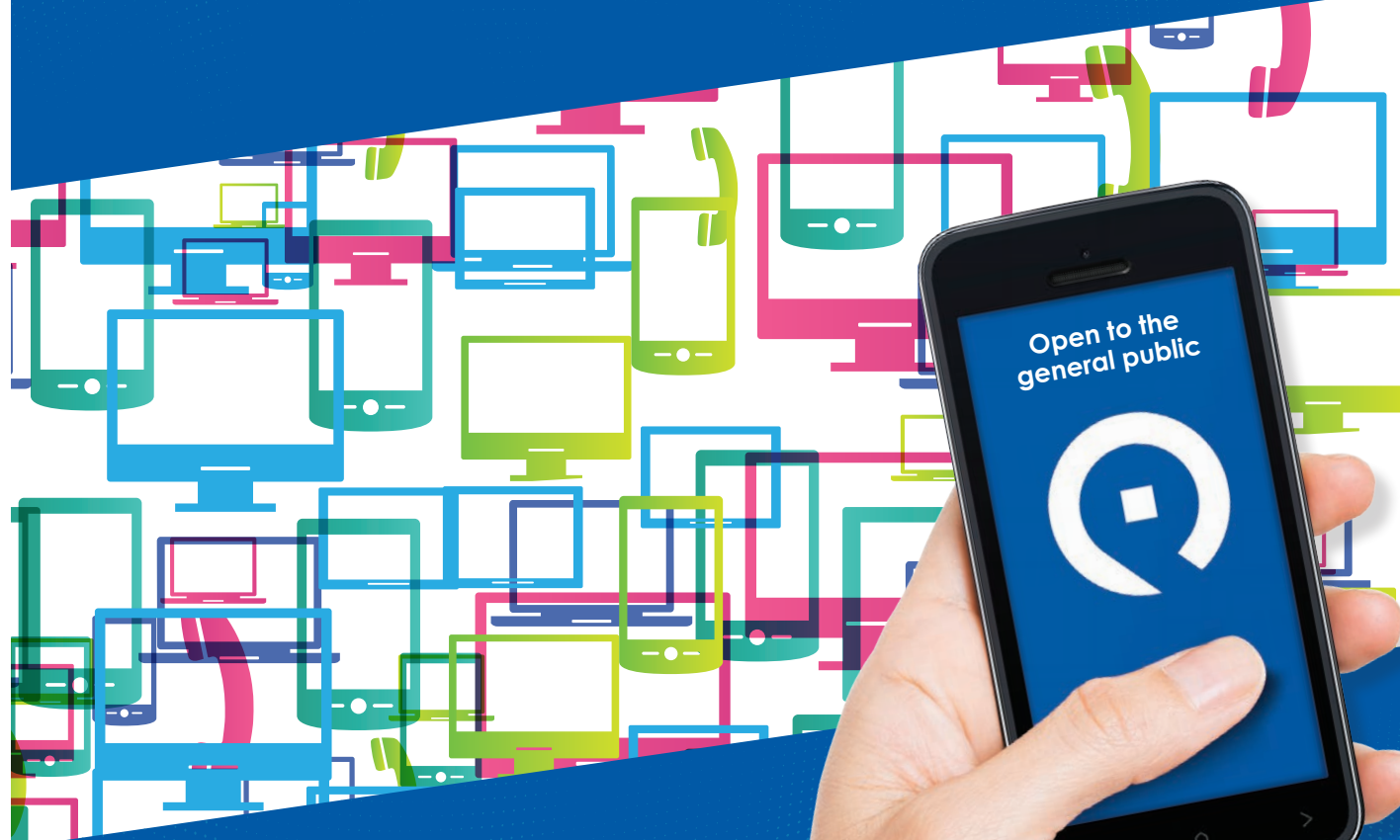
630-379-2452
PaceBus.com/OnDemand

Weekday Scheduled Stops	
Metra UP-W Line Geneva Station	
Arrive	Depart
5:50 am	5:54 am
6:50 am	6:54 am
7:53 am	8:02 am
8:55 am	8:59 am
10:31 am	10:35 am
12:30 pm	12:34 pm
2:41 pm	2:45 pm
4:37 pm	4:41 pm
5:47 pm	5:51 pm
6:32 pm	6:36 pm

Saturday Scheduled Stops	
Metra UP-W Line Geneva Station	
Arrive	Depart
8:55 am	8:59 am
9:55 am	9:59 am
10:55 am	10:59 am
11:55 am	11:59 am
12:55 pm	12:59 pm
1:55 pm	1:59 pm
2:55 pm	2:59 pm
3:55 pm	3:59 pm
4:55 pm	4:59 pm
5:50 pm	5:54 pm

Board the On Demand without a reservation at the locations and times shown above. The Kane County Judicial Center will be served by reservation between 9:00 am and 3:30 pm ONLY. At other hours, connect to Pace Route 801 to access the Judicial Center.

No Sunday or holiday service. For additional scheduled service information, please visit PaceBus.com.




Connecting Communities




PaceBus.com/OnDemand



February 2023

An affordable ride is right outside your front door.

You can go anywhere in this area for just \$2.00 with Ventra!

<p> Transfer at the Geneva Station to/from Routes 801 and 802 and the Batavia On Demand (847) 254-7471.</p>	
<p>Dark black line indicates On Demand service area borders. Locations on both sides of the border road are served.</p>	<p>Connecting Routes 801  802 </p>
<p>*Service to/from St. Charles East High School is by reservation only. Buses will pick up and drop off passengers ONLY at the bus stop located in front of Norris Cultural Arts Center.</p>	

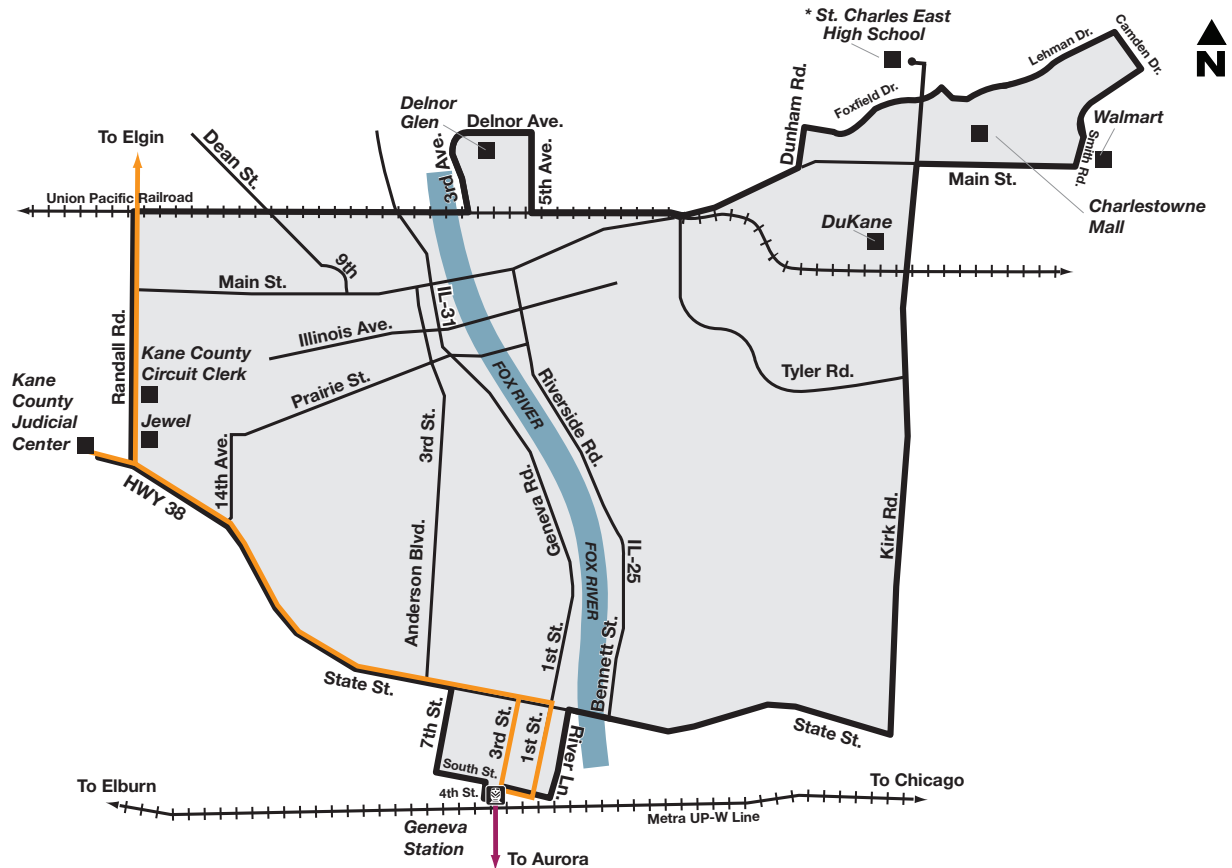
Pace On Demand service is a reservation based, curb-to-curb, shared ride service for commuters just like you.

Reserving your trip is easy. Book your trip online, or simply give us a call to go anywhere in the designated service area. Rides are booked on a first-come, first-serve basis, so make sure to reserve your ride at least one hour (or up to 7 days) in advance. Get out the door and on your way with Pace On Demand.


At the Geneva Metra Station, pickups do not need to be prearranged. See schedule on reverse. On Demand service is wheelchair accessible and is open to the general public.

Pace On Demand accepts cash, Ventra®, Ventra transfers and honors the Reduced Fare Policy for eligible customers. For more information, visit PaceBus.com.

\$1.00 fare is available to seniors, persons with disabilities, Medicare card holders, and military personnel.



Get started:

 **Weekdays**
5:30 am - 7:00 pm
Saturday
8:00 am - 6:30 pm



Reservations
1 hour - 7 days prior



Online
PaceBus.com/OnDemand



Phone
630-379-2452



One way \$2.00
Cash = \$2.25



Get riding!