

Public Meeting #2

PULSE

Milwaukee Line

August 26, 2015





FAST



FREQUENT



RELIABLE



Pulse Program Team

Lead Agency

Pace Suburban Bus

Project Consultant Team

HNTB – Prime Consultant



Pulse Program Partners

Chicago Department of Transportation



Chicago Metropolitan Agency for Planning



Chicago Transit Authority



City of Chicago



Federal Transit Administration



Illinois Department of Transportation



Regional Transportation Authority



Village of Niles





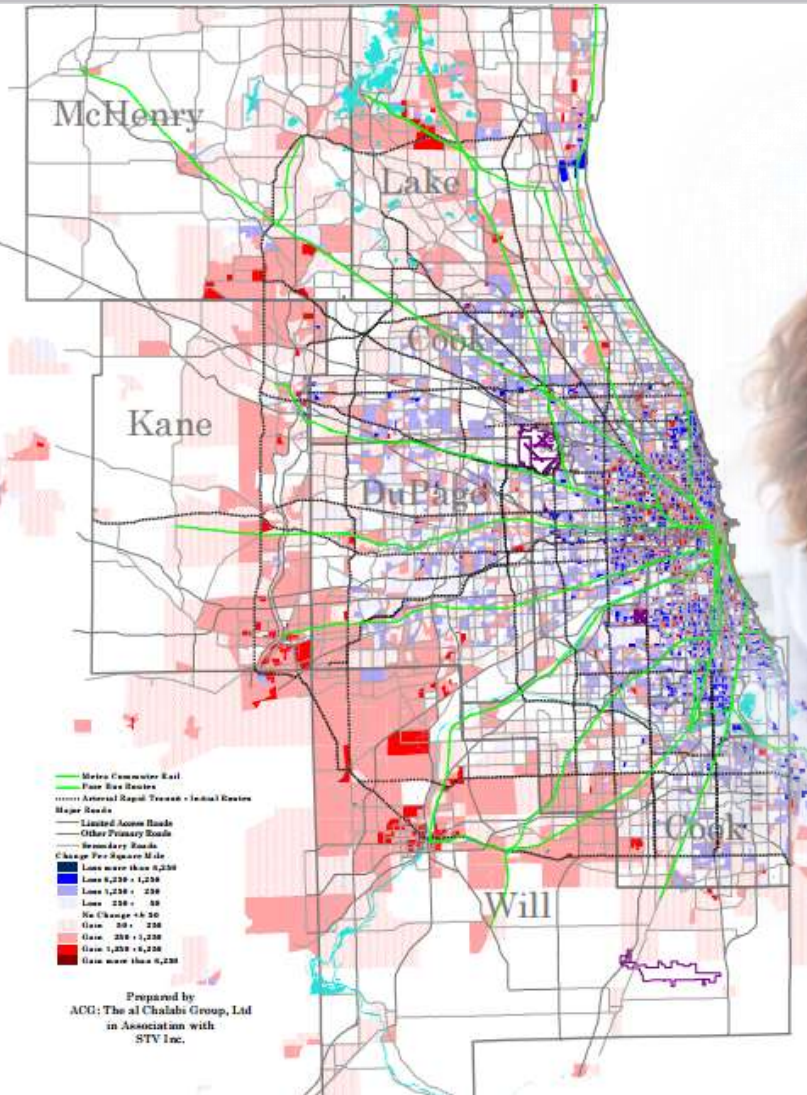
Vision for the Future

*Create a **more efficient**
suburban transit network*





Growth Ahead



Prepared by
 ACG: The al Chalahi Group, Ltd
 in Association with
 STV Inc.



PULSE

Milwaukee Line



Pace's Pulse Program

7 Priority Corridors:

- **Milwaukee Avenue**
- Dempster Street
- Harlem Avenue
- Cermak Road
- Halsted Street
- 95th Street
- Roosevelt Road



-
- Pace Vision 2020 (2001)
 - Arterial Rapid Transit Study (2009)
 - 24 key corridors identified



Purpose and Need

Purpose

Provide an enhanced and cost-effective bus transit service



Need

Improve frequency • Improve reliability • Improve travel time
Improve quality of facilities



Process & Schedule

We are here



PROJECT TIMELINE Pulse Milwaukee Line



- Initial design concepts & station locations
- Data collection
- Stakeholder outreach

- Stakeholder outreach
- Environmental & engineering analysis

- Facilitate & incorporate stakeholder input
- Final design

● PUBLIC MEETING



Environmental Review Completed

Following federal process requirements of the
National Environmental Policy Act (NEPA)

Natural Environments

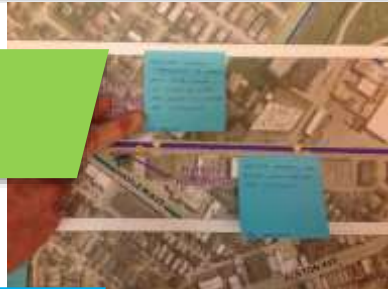
**Minimal
Impact**

**Built and Human
Environments**



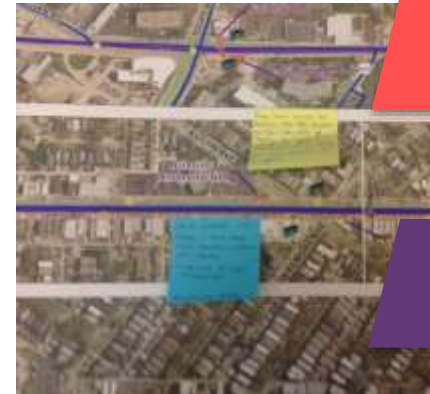
What Have We Heard?

Support



Operating plan

Bike/Ped amenities



Transit Signal Priority

Local service



Transit connectivity

Station locations

Alternative ideas



Stakeholder Involvement Critical to Success



Program Website

Social Media

Public Meetings

Corridor Advisory Group

Stakeholder Meetings

Visit: PaceBus.com/Pulse




PULSE

Milwaukee Line



Shorter wait times



Passenger amenities

PROGRAM BENEFITS



Links to transit services



Reliable schedule



Bike/Ped connectivity



Transit Signal Priority (TSP)

*TSP works automatically
to allow buses running behind schedule
to catch up*

Already shortens travel times by up to
20% on other corridors

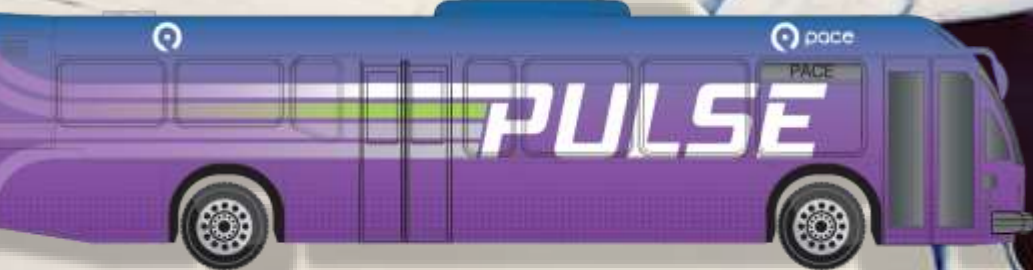
Improves travel time for all users



Vehicle Passenger Amenities



*Pulse will accept Ventra[®]
cards and cash*





Pulse Stations

- Designed with enhanced passenger amenities
 - *Route information kiosks*
 - *Real-time bus arrival information*
 - *Heated shelters*
 - *Seating*
 - *Landscaping*
 - *Bicycle racks*
 - *ADA accessible*





What Have We Done Since April?

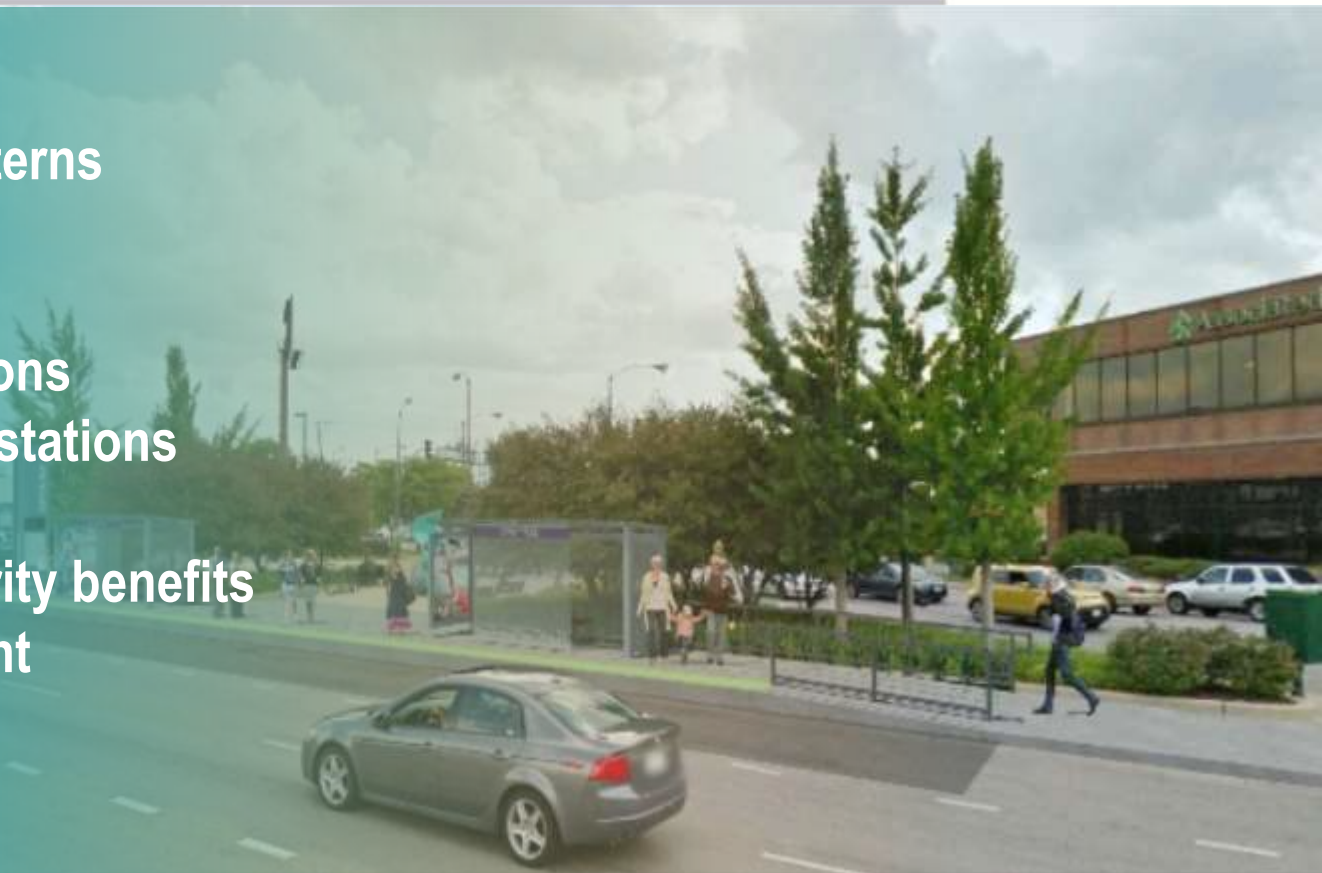


- Ongoing federal, state, and local agency coordination
- Environmental analysis prepared and approved
- Section 106 Historic Resources Report approved
- Corridor Advisory Group Meeting #2 - August 13, 2015
- Specific station sites selected



Final Station Location Criteria

- Pace ridership patterns
- Site constraints
- Safety conditions
- Sidewalk connections
- Proximity to other stations and bus routes
- Transit signal priority benefits
- Impacts on adjacent property owners





Final Station Locations

Please visit the exhibit room for detailed information regarding final station locations!

Visit: PaceBus.com/Pulse





Cost and Funding

Cost

- Capital construction costs \approx \$9.1 million
- New vehicles \approx \$4.5 million

Funding

- Federal Congestion Mitigation and Air Quality Grant – Chicago Metropolitan Agency for Planning
- Pace funds

TSP Funding

- Regional Transportation Authority
- Congressional funding support





Next Steps

- Design and construction
- Local Agency Agreements (if necessary)
- Construction begins 2016
- **Service begins 2017**





We want to hear from you!

Comments submitted by **September 2, 2015**, will become part of the public meeting record

- *Program website*
- *Comment form*



Visit: PaceBus.com/Pulse



Thank you!

Please visit the exhibit area to
meet with program team members.

Special thanks to the

Copernicuscenter