

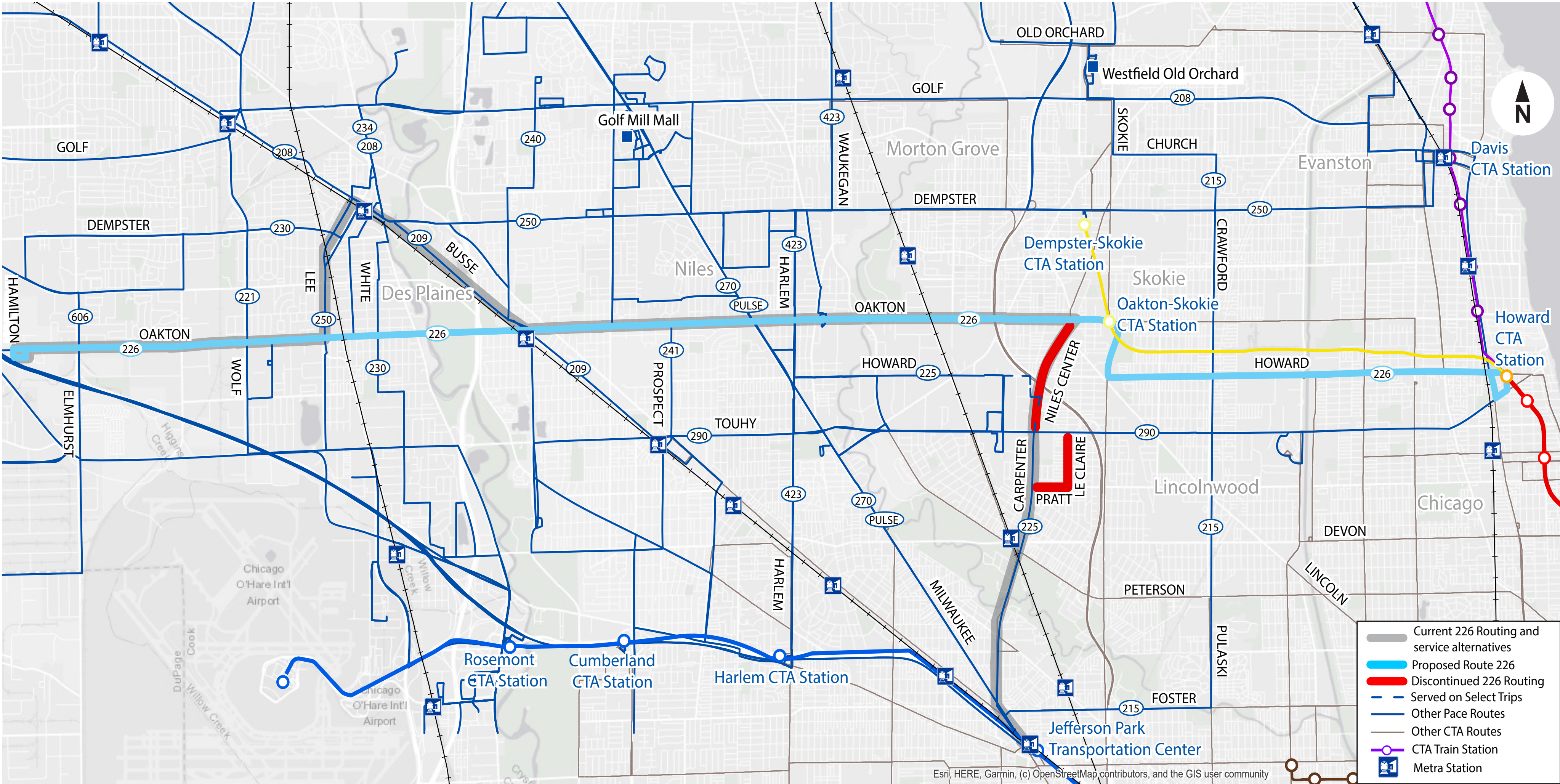


Route 226 Proposed Service Changes



Summary of Proposed Changes

- Service would extend between Oakton/Lincoln and Howard CTA Station via Oakton, Skokie, Howard.
- Between Touhy and Jefferson Park Transportation Center, service on Milwaukee, Central, Carpenter would be replaced by service on Route 225.
- Service west of Milwaukee would stay on Oakton to Oakton & Hamilton. Route would no longer serve downtown Des Plaines via Busse-Minor and Lee-Manheim.



Proposed Frequency (Minutes)		
Weekday Peak:	20	east of Milwaukee Ave.
	40	west of Milwaukee Ave.
Weekday Off-Peak:	30	east of Milwaukee Ave.
	60	west of Milwaukee Ave.
Weekday late-night:	60	east of Milwaukee Ave.
Saturday/Sunday/Holiday:	30	east of Milwaukee Ave.
Saturday/Sunday/Holiday late-night:	60	east of Milwaukee Ave.

226 West	1st Westbound trip departing Howard CTA to Oakton/Hamilton	Last Westbound trip departing Howard CTA to Oakton/Hamilton
Weekday	5:46am	5:46pm
Saturday	No service	No service
Sunday/Holiday	No service	No service

226 West	1st Westbound trip departing Howard CTA to Oakton/Milwaukee	Last Westbound trip departing Howard CTA to Oakton/Milwaukee
Weekday	5:26am	11:26pm
Saturday	6:15am	11:48pm
Sunday/Holiday	6:52am	11:25pm

226 East	1st Eastbound trip departing Oakton/Diane to Howard CTA	Last Eastbound trip departing Oakton/Diane to Howard CTA
Weekday	5:03am	6:23pm
Saturday	No service	No service
Sunday/Holiday	No service	No service

226 East	1st Eastbound trip departing Oakton/Milwaukee to Howard CTA	Last Eastbound trip departing Oakton/Milwaukee to Howard CTA
Weekday	5:02am	11:42pm
Saturday	6:12am	12:12am
Sunday/Holiday	6:21am	11:51pm

How would service improve?

- New or improved connections to the Oakton-Skokie Yellow Line, Howard CTA Station and Pulse Milwaukee Line.
- More frequent service and longer service hours.
- New Saturday/Sunday/Holiday service between Howard CTA and Milwaukee Avenue/Oakton