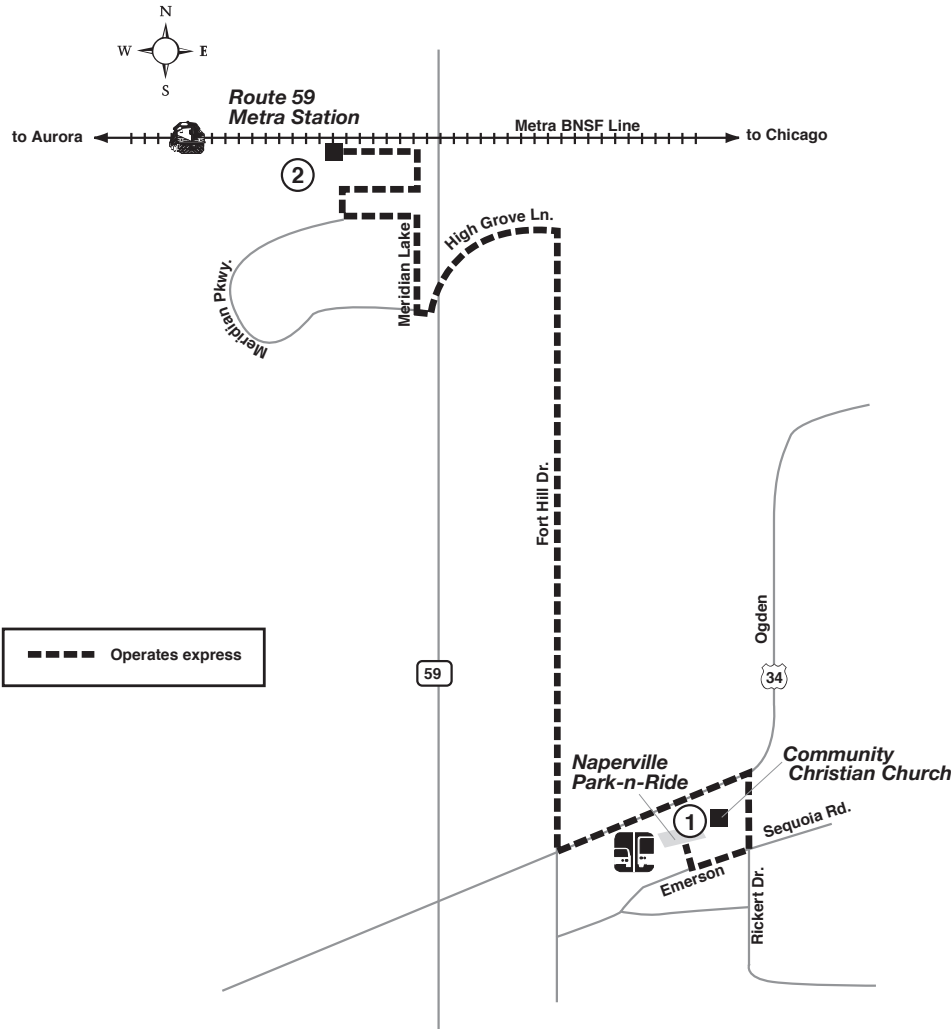


Route 673

Effective Date
July 12, 2010



REGULAR FARE ROUTE

**Exact Fare Required
Driver Has No Change**

Please refer to the Pace Fare Guide for details about current fares, passes, tickets, reduced fares, restrictions and additional information. Pace has a variety of passes and tickets that can make traveling on Pace, CTA and Metra easier and more cost effective. Call (847) 364-7223 or visit www.pacebus.com for details. Reduced Fares are available for children (ages 7-11), students traveling to and from school, and persons with disabilities. A Medicare card along with another source of identification with a photograph and date of birth is acceptable to obtain the RTA Reduced Fare Card/Permit. The RTA Reduced Fare Permit is required for persons with disabilities. Free rides are offered to area residents age 65 and older (with a Senior Reduced Fare Card or Senior Ride Free Smart Card), children under 7, and active duty military personnel in uniform. Persons with disabilities (who are enrolled in the Illinois Circuit Breaker Program) may ride Pace fixed route service free of charge with the Circuit Permit. To register for a permit/card, please contact the RTA at 836-7000.

TRAVEL INFORMATION

If you need transit information please call:
The RTA Travel Information Center, open daily from 5:00 a.m. to 1:00 a.m. Use from all suburban area codes. **836-7000**
TTY# (For HEARING IMPAIRED ONLY) (312) 836-4949
Pace Customer Relations, Monday through Friday from 8:00 a.m. to 5:00 p.m. **(847) 364-PACE (7223)**
TTY# (Pace information for HEARING IMPAIRED ONLY) (847) 364-5093

CARRIER INFORMATION

OPERATED BY: First Student, Naperville
For lost and found call (630) 904-0900

ADDITIONAL INFORMATION

The schedules, fares and other information in this timetable are subject to change. Pace does not assume responsibility for errors in timetables, nor for inconvenience or damage resulting from delayed trains or buses or failure to make connections.

673

Fort Hill Express



All Pace service is wheelchair accessible.



pace

All Pace buses are equipped with bike racks.

Major Destinations

Naperville Park-n-Ride

Metra BNSF Line Route 59 Station

Weekday Rush Hour Service

July 12, 2010