



# Moving into the Future

*The Weekly Newsletter from America's Most Efficient  
Suburban Transit Agency*

Vol. II, Number 59

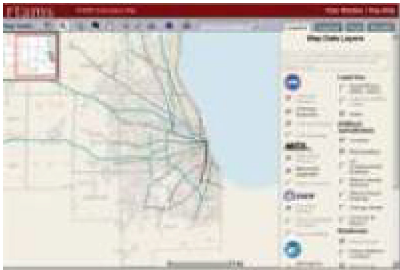
[www.pacebus.com](http://www.pacebus.com)

September 15, 2005

*Pace is the suburban public transit agency for Chicagoland's six-county metropolitan region. As the 13th largest bus agency in the U.S., Pace operates fixed bus routes, vanpools and paratransit services in nearly 250 municipalities consisting of 5.2 million residents. Visit the [Route Finder](#) for bus route information.*

## RTA shares wealth of transit information via RTAMS site

Have you ever wanted to know which Pace bus routes are in a certain congressional district? Would you like to see a proposed Pace project in virtual form? Do you want the capability of seeing where Pace passenger facilities are in relation to streets and major roadways? If so, the [RTA](#) is providing the answers to these and many other questions about transportation and planning in northeastern Illinois with a public version of its online [transit information system](#).



*Maps such as this are now publicly available  
at the RTA's RTAMS Web site.*

The RTA's Regional Transportation Asset Management System (RTAMS) website [www.rtams.org](http://www.rtams.org) became available to the public on June 23. RTAMS provides detailed planning and financial information about the transportation systems in northeastern Illinois. Users can search and cross-reference RTAMS's data sets, including the location of transportation assets and services, public transit ridership, Tollway traffic volumes, planning studies, transit sales tax revenues and political jurisdictions. The site also includes information from the 2030 Regional Transportation Plan, the regional traffic signal inventory, aerial imagery, and land use maps.

RTAMS was developed by the RTA in coordination with the [CTA](#), [Metra](#), [Pace](#), the [Illinois State Toll Highway Authority](#) (Tollway), the [Chicago Area Transportation Study](#) (CATS), the [Northeastern Illinois Planning Commission](#) (NIPC) and the [University of Illinois Chicago](#) (UIC). Originally designed as an in-house tool for RTA staff, the RTAMS information system has evolved into an extensive intermodal transportation web site popular among transportation professionals, elected officials and advocacy groups.



***RTAMS provides a variety of information on public transit, searchable by political district or other categories.***

The region's transportation agencies have had access to RTAMS since 2002, and municipalities have had access since 2003. RTA officials felt that the introduction of a public version of the RTAMS site was the next logical step. "Chicago has the second largest transit system in the nation. Our goal was to package the wealth of data about our transportation system so that professionals and members of the public could easily search and find information about how transportation is funded, planned, and used in northeastern Illinois," said RTA Executive Director Paula S. Thibeault. "The RTAMS web site enables users to examine our transportation system from both regional and localized perspectives."

Thus far, response to the public release of the RTAMS web site has been favorable. Traffic on the site has increased three-fold since June 23. RTA staff is continuing to expand the web site capabilities and work with other partners to add new content. Access RTAMS at [www.rtams.org](http://www.rtams.org) or by clicking on the RTAMS logo on the RTA web site [www.rtachicago.com](http://www.rtachicago.com). Users are required to create an RTAMS account through a simple online form.

"Moving into the Future" is a weekly newsletter provided by Pace Suburban Bus to update interested parties on the services Pace provides and the progress it makes to constantly improve. Forward to others as you wish. For best results, please print in landscape format. Please submit feedback or remove yourself from the mailing list by calling 847-228-2421 or e-mail your request to [govt.affairs@pacebus.com](mailto:govt.affairs@pacebus.com).

© 2005 Pace Suburban Bus